

NOV 14TH SUNDAY 8AM – 2PM

ORCHID CLEARANCE SALE

Long Life Orchids Nursery: 281 Luakaha St, Hilo, HI 96720

BUY 1-9 Orchids @

\$8ea. or 4 for \$30

BUY 10+ Orchids @

\$7ea. or 15 for \$100

BUY 50+ Orchids @

\$6 each

Bare Rooted Bundles of 10
Cattleyas Ready to
plant/MOUNT*

\$50/BUNDLE



ASSORTED CATTLEYAS!

Please expect most to be NON BLOOM... some will soon.

***Please consider Hilo Orchid Society's "ORCHID ISLE PROJECT"**

"Our goal is to rekindle the appreciation of orchids by placing orchids in public places such as parks and airports, as well as encouraging businesses and homeowners to place orchids on their properties where passers-by can see them, so that everywhere you go on the island you will see orchids."

KALAPANA TROPICALS, the sponsor, will match up to 500 bare rooted cattleyas purchased for this wonderful benefit to the community.

Parking is FREE: Inside the Nursery (limited) or street parking on Luakaha street, next to the nursery (please be courteous to the residents near by).

PRODUCTS: Assorted Cattleyas (3,000+), Paphiopedilums (1,000+), Oncidium (500+) & Nobile Dendrobiums (500+)

Email: kalapanakev@gmail.com if you have any questions or seeking a large volume purchase.



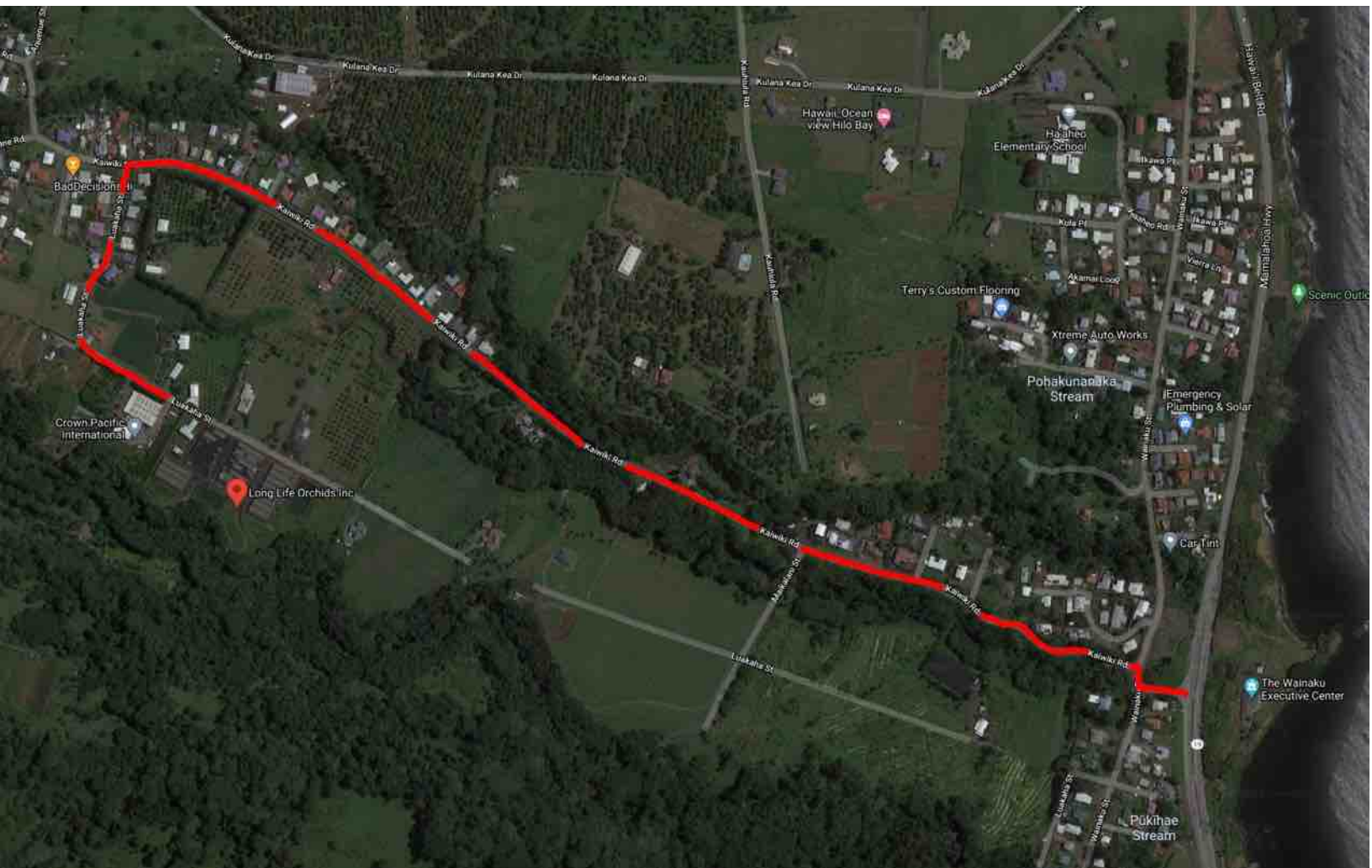
IMPORTANT:

- 1. Mask wearing is required to enter the nursery. We reserve the right to ask the visitors to wait in a line to avoid overcrowding.**
- 2. Sorry. No public restroom is available. Please keep in mind that the nursery is in the final phase of closure and operating with minimal staff.**
- 3. The floors may be uneven or slippery – please wear secure, nonslip shoes**
- 4. You are allowed UPPER GREENHOUSE ONLY (where the products are). A wholesale customer seeking a large volume of cattleyas (250+) may be shown the lower greenhouse with an escort for your SAFETY**

We will do our best to prepare and organize to make this sale a success and enjoyable. However, you are responsible for your personal safety during your visit to this event. Hilo Orchid Society, Long Life or Kalapana Tropicals are not liable for any injuries sustained during the sale nor COVID or other related illness after the sale.

RELEASE AND WAIVER.

I HEREBY RELEASE, WAIVE AND FOREVER DISCHARGE ANY AND ALL LIABILITY, CLAIMS, AND DEMANDS OF WHATEVER KIND OR NATURE AGAINST **Long Life Orchid or Kalapana Tropicals, Inc.** AND ITS AFFILIATED PARTNERS AND SPONSORS, INCLUDING IN EACH CASE, WITHOUT LIMITATION, THEIR DIRECTORS, OFFICERS, EMPLOYEES, VOLUNTEERS, AND AGENTS (THE “RELEASED PARTIES”), EITHER IN LAW OR IN EQUITY, TO THE FULLEST EXTENT PERMISSIBLE BY LAW, INCLUDING BUT NOT LIMITED TO DAMAGES OR LOSSES CAUSED BY THE NEGLIGENCE, FAULT OR CONDUCT OF ANY KIND ON THE PART OF THE RELEASED PARTIES, INCLUDING BUT NOT LIMITED TO DEATH, BODILY INJURY, ILLNESS, ECONOMIC LOSS OR OUT OF POCKET EXPENSES, OR LOSS OR DAMAGE TO PROPERTY, WHICH I, MY HEIRS, ASSIGNEES, NEXT OF KIN AND/OR LEGALLY APPOINTED OR DESIGNATED REPRESENTATIVES, MAY HAVE OR WHICH MAY HEREAFTER ACCRUE ON MY BEHALF, WHICH ARISE OR MAY HEREAFTER ARISE FROM MY PARTICIPATION WITH THE ACTIVITY.



Directions from Hilo:

Take the belt road north over the “singing bridge.”

Turn left at the first possible left turn.

Go up a short hill. Jog right, then immediately jog left onto Kaiwiki St.

Proceed up Kaiwiki St. Turn left onto Luakaha St.

Long Life Orchids is on the right: a house with greenhouses behind it.